



## No.50 Ocean Blue



### Capacity 140



#### Seats

Main Floor 96  
2F Floor 44



#### Deck Types

1F Rear Deck  
2F Deck



#### Restroom

Men 1  
Women 1



#### Extra Information

Microphone  
CD, DVD, iPod (cable)  
PC (cable), TV Monitor  
Projector

#### Pier Details

- Odaiba Pallete Town Pier
- Ariake Pier
- Takeshiba Kogatasen Pier
- Minatomorai Pukari Pier
- Zono Hana Pier

#### Basic Routes

- Odaiba Area Course
- Yokohama Course
- Night View Of The Factory
- Haneda Airport Course

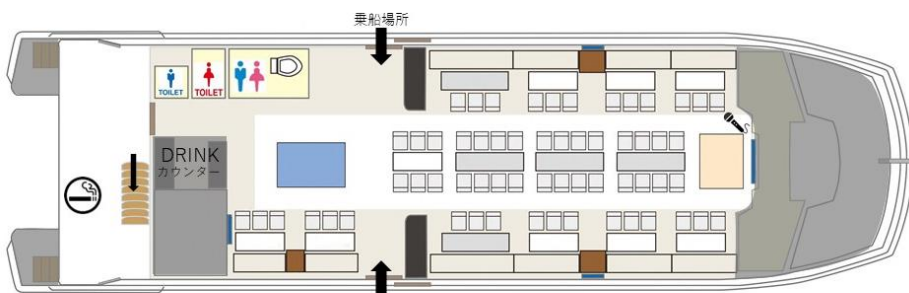
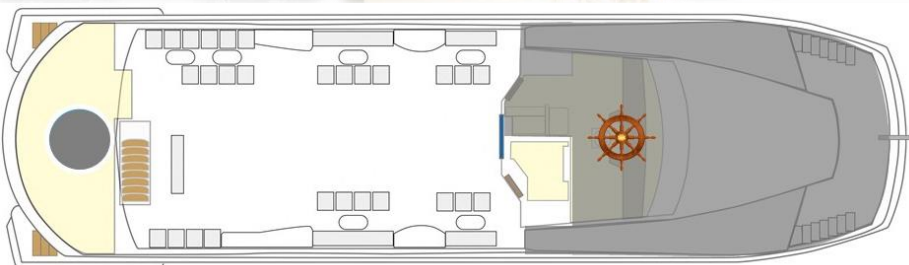


Table Size  750 x 2020  750 x 1500  750 x 975



Cruise Examples And Other Details Are Here

